

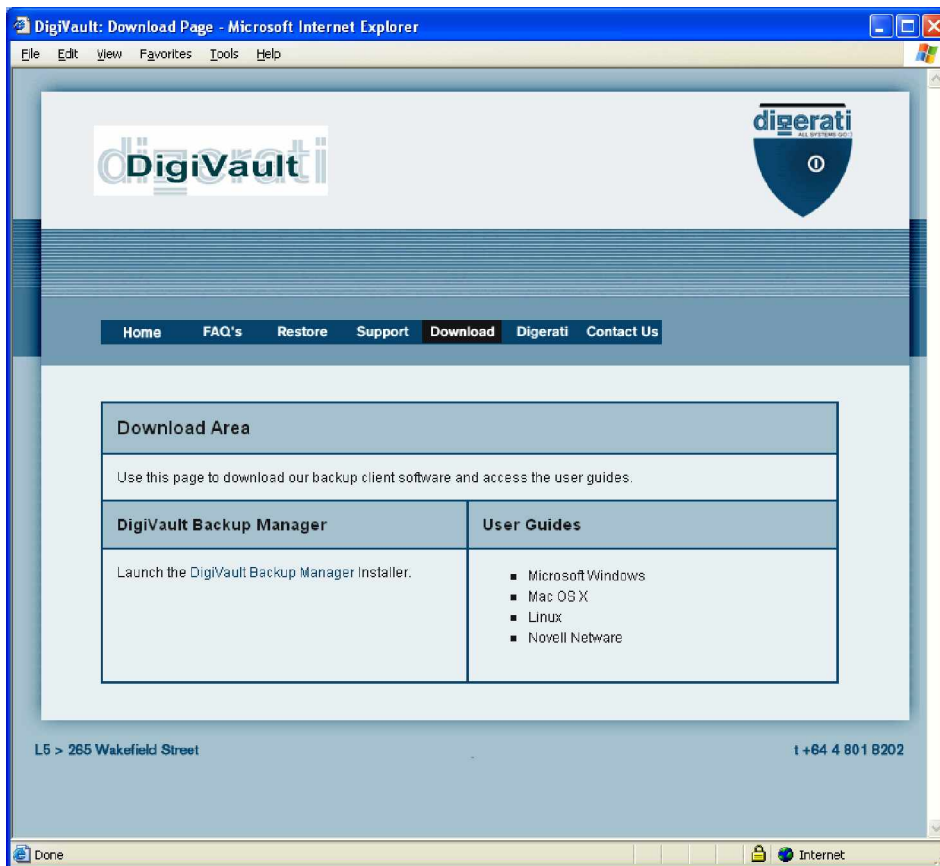
# DigiVault

DigiVault Online Backup  
Manager

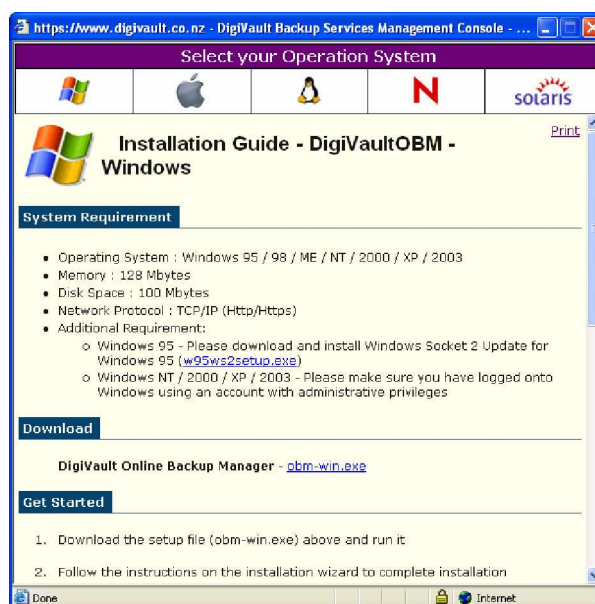
Installation Guide  
for  
Microsoft Windows



This installation guide provides step by step instructions. Firstly, open your web browser, e.g. Microsoft Internet Explorer, and go to <http://www.digivault.co.nz>.

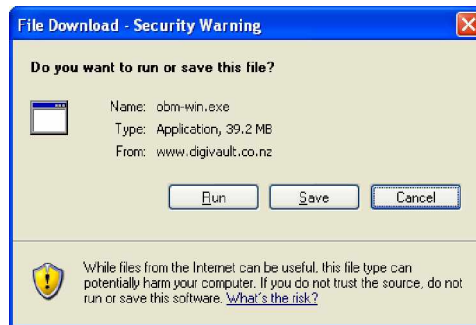


Select the Download tab from the DigiVault web site, then click 'DigiVault Backup Manager'.



Users running Windows 95 need to first install the Windows Socket 2 Update; click '[w95ws2setup.exe](#)'. For all other versions of Windows, go to the next step.

Click 'obm-win.exe'.



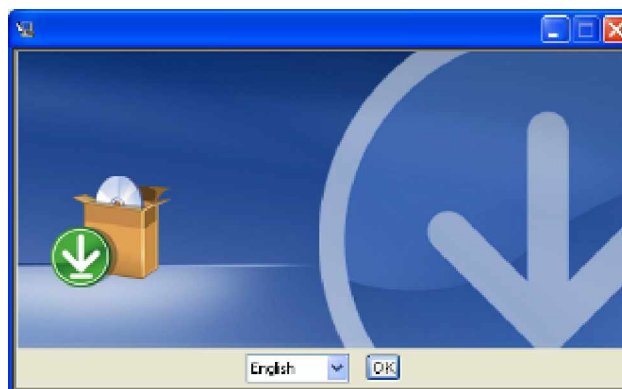
Click Run.

Windows XP SP2 may display the following dialog box:



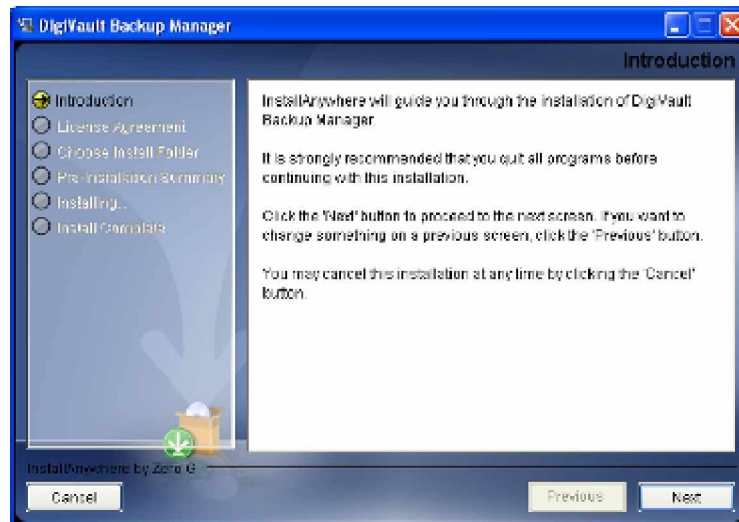
Click Run.

The installation program will then begin. Once initialised, the following screen will be displayed:

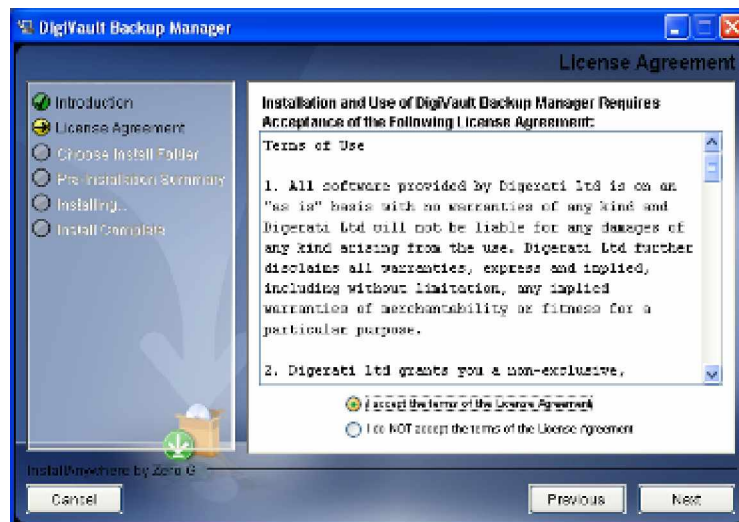


Click OK.

Follow the installation wizard's instructions:

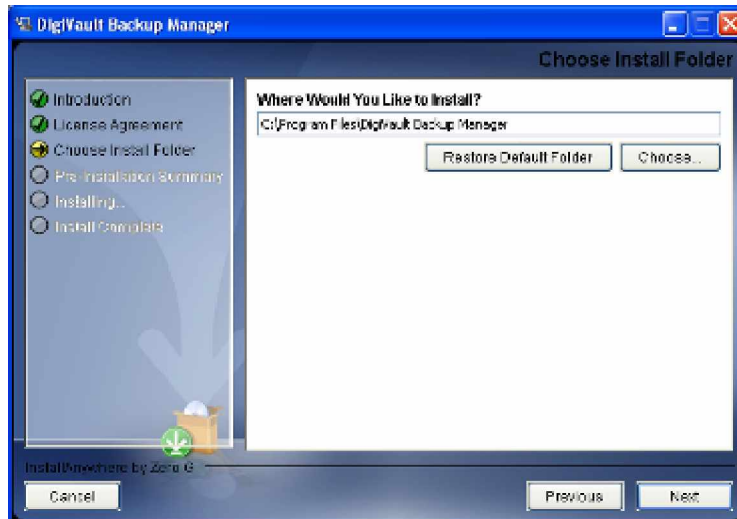


Click Next.

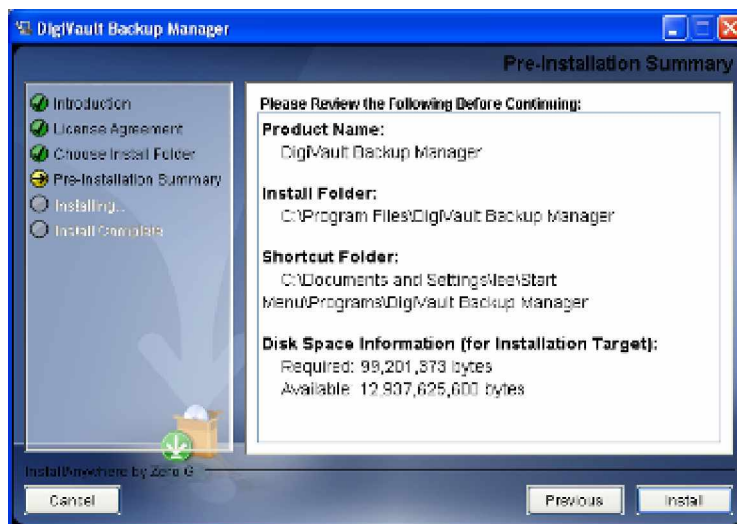


Select 'I accept the terms of the License Agreement'. Click Next.

Note: If you do not agree, you must click Cancel and exit the installation wizard.

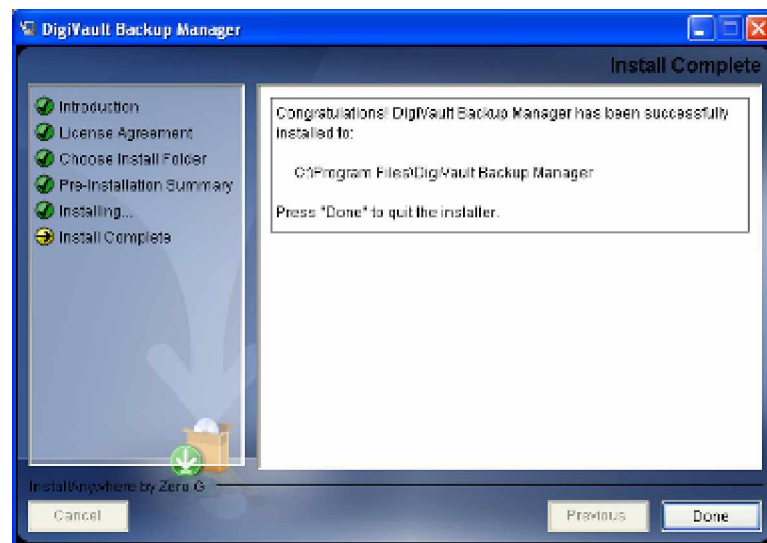


Specify the installation location or leave the default setting. Click Next.



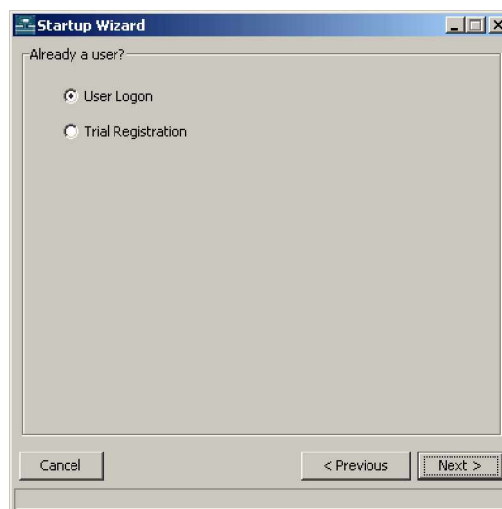
Displayed on the screen is the Pre-Installation Summary; ensure you check the details. If you wish to make any changes, click Previous. Once you're happy to proceed, click Install.

Once completed, the following screen will display:



Click Done to close the installation wizard.

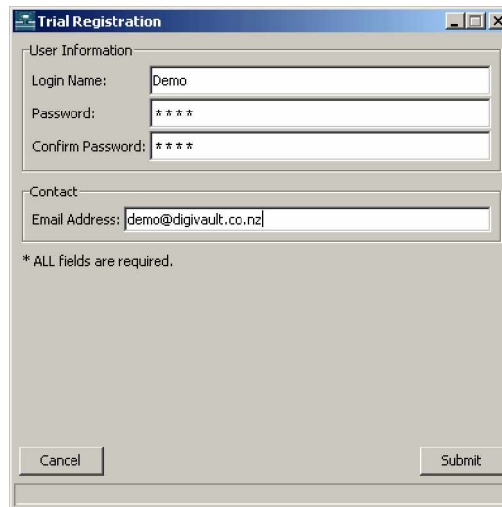
DigiVault Online Backup Manager will launch automatically.



As a new DigiVault customer, you must select 'Trial Registration' and then click Next.

Note: Existing users should now refer to the DigiVault User Guide, which can be found on the DigiVault support page at <http://www.digivault.co.nz/>.

The following screen will now be displayed:



The screenshot shows a 'Trial Registration' dialog box with the following fields and values:

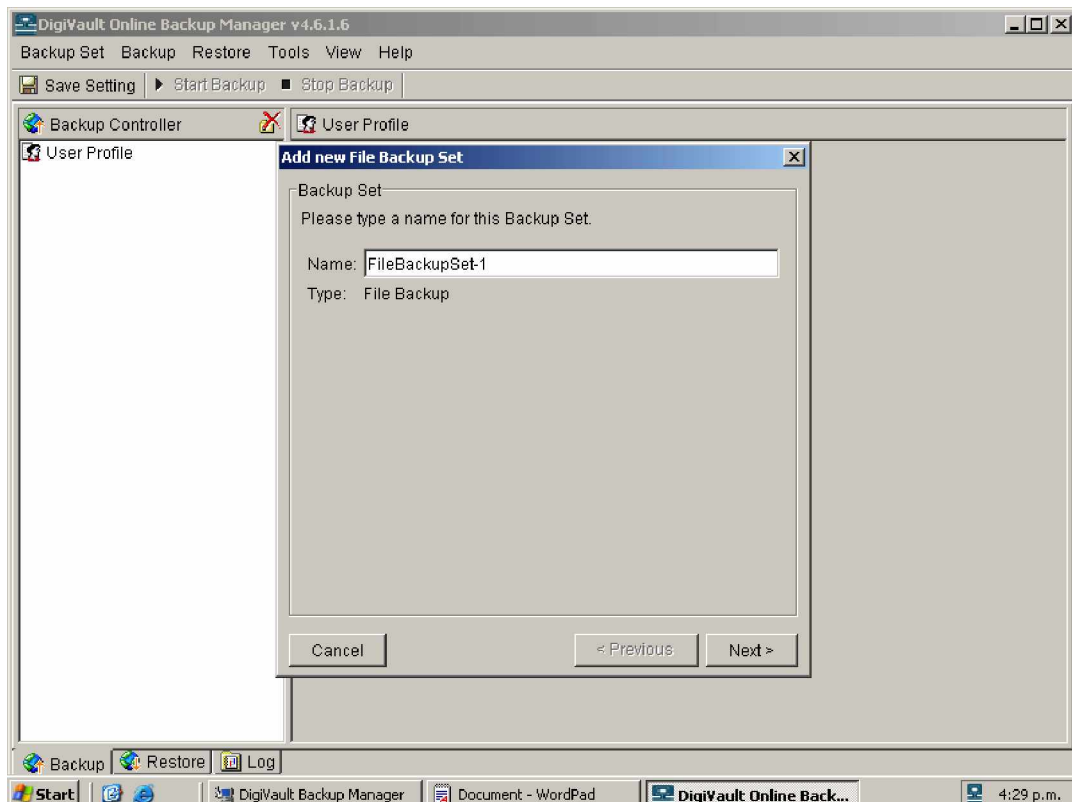
- User Information:**
  - Login Name: Demo
  - Password: \*\*\*\*
  - Confirm Password: \*\*\*\*
- Contact:**
  - Email Address: demo@digivault.co.nz

Below the fields, it states: \* ALL fields are required. At the bottom, there are 'Cancel' and 'Submit' buttons.

Choose a Login Name and Password and re-enter your password in the 'Confirm Password' box. Finally, enter a valid email address in the 'Email Address' box. Once all fields have been completed, click Submit.

Note: DigiVault uses the email address to send status reports about your backups and restores. Digerati Ltd will not use this information for any other purpose without your permission.

With the installation and user setup completed, you must now create a 'File Backup Set'. A 'File Backup Set' contains the information such as: what to back up, where it's located and which encryption method to use. DigiVault Online Backup Manager will display the following window:

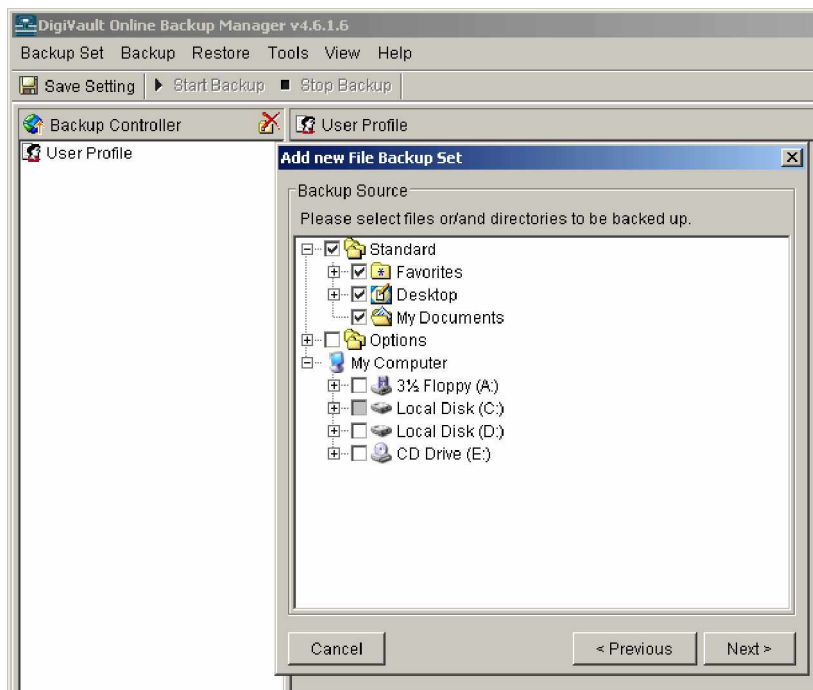


The screenshot shows the 'DigiVault Online Backup Manager v4.6.1.6' application window. The main interface includes a menu bar (Backup Set, Backup, Restore, Tools, View, Help) and a toolbar (Save Setting, Start Backup, Stop Backup). The main area is divided into 'Backup Controller' and 'User Profile' sections. A 'User Profile' window is open, displaying the 'Add new File Backup Set' dialog box. This dialog box contains the following information:

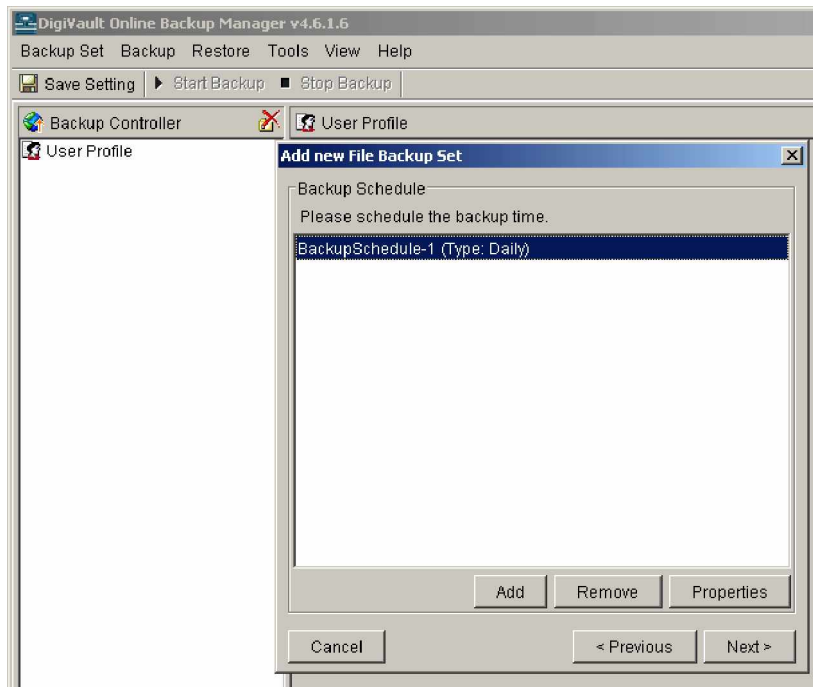
- Backup Set:** Please type a name for this Backup Set.
- Name:** FileBackupSet-1
- Type:** File Backup

At the bottom of the dialog box, there are 'Cancel', '< Previous', and 'Next >' buttons. The Windows taskbar at the bottom shows the Start button, several icons, and the following open applications: DigiVault Backup Manager, Document - WordPad, and DigiVault Online Backup Manager. The system clock shows 4:29 p.m.

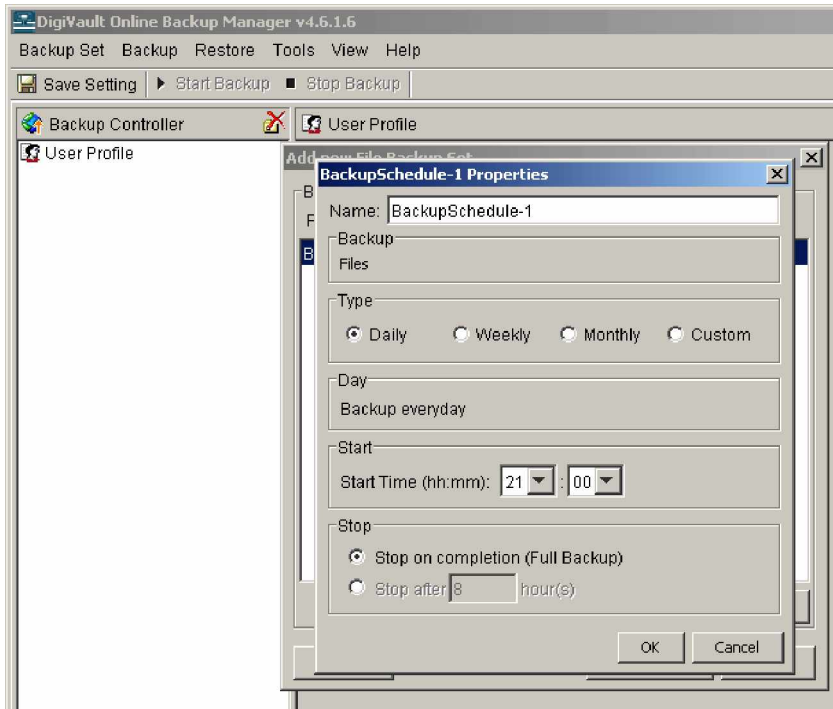
First provide a name for the 'File Backup Set'. DigiVault automatically inserts one for you, although we suggest you use something more meaningful to you. Click Next.



Specify which data is going to be backed up. Again, DigiVault has selected for you, but you can change this. Click Next.

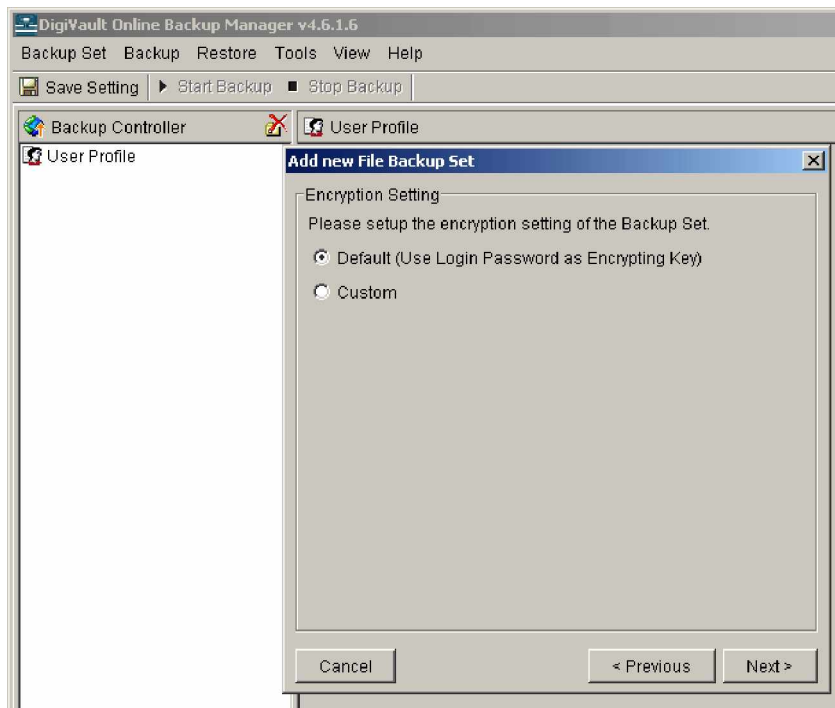


Click Properties to specify the backup schedule.

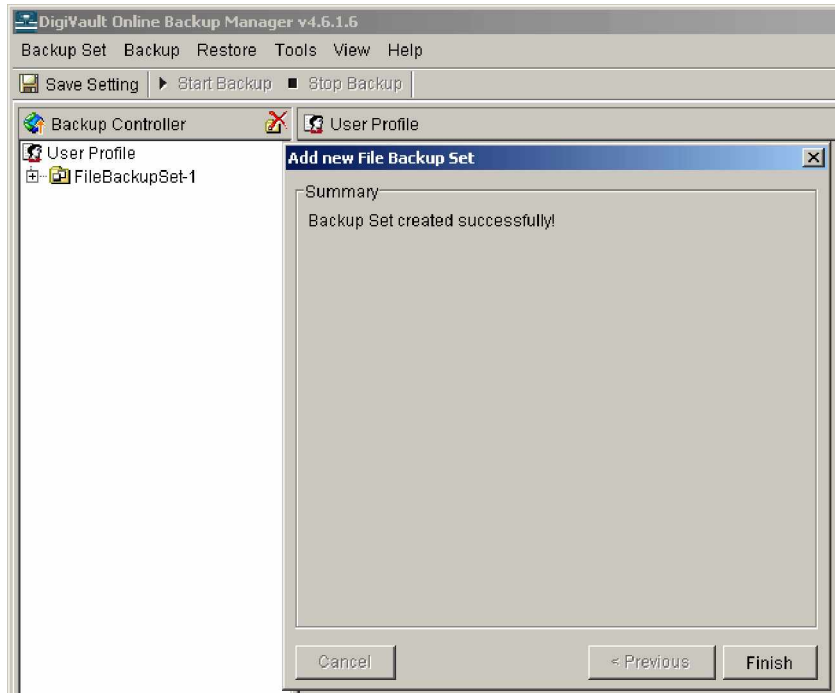


Once you have specified how often, and when, the backup will run. Click OK and then Next.

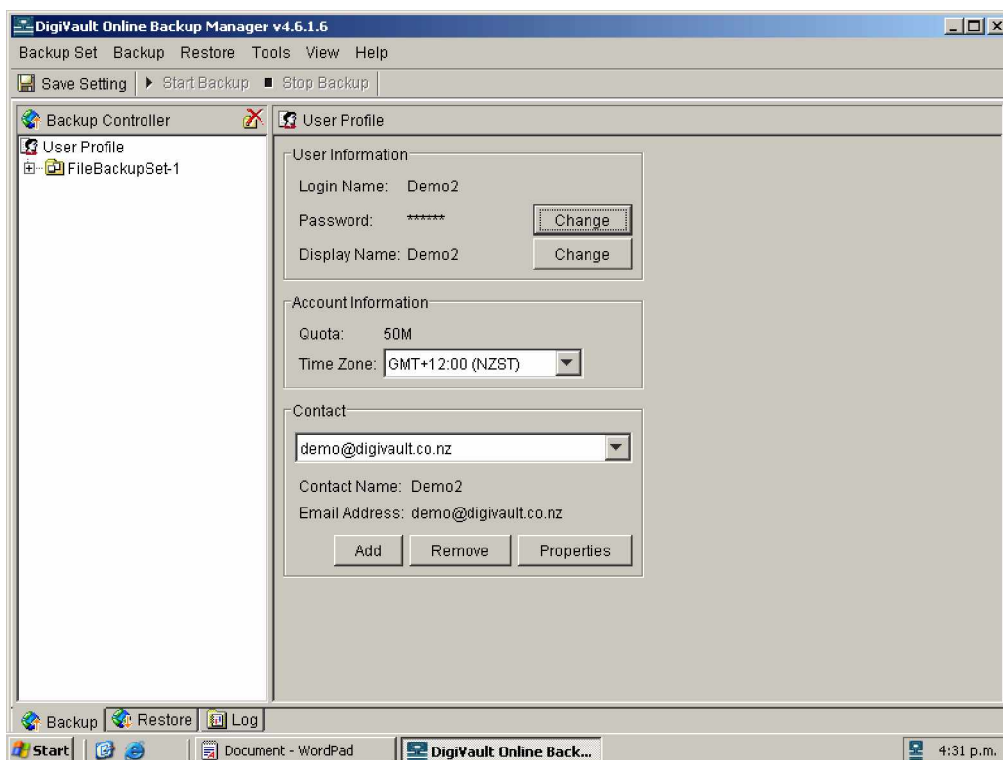
Finally, you can specify an encryption type for your data. We recommend Default, but you may select Custom to specify other types of encryption.



Click Next to continue.



Your 'File Backup Set' has completed and saved to the DigiVault server. Once you click Finish, DigiVault Online Backup Manager will remain open so that you can check details, modify the 'File Backup Set' or create additional ones.



For further assistance, please refer to the user guide which is available from the DigiVault support page at <http://www.digivault.co.nz>. Technical enquiries may also be submitted at <http://www.digivault.co.nz>.